

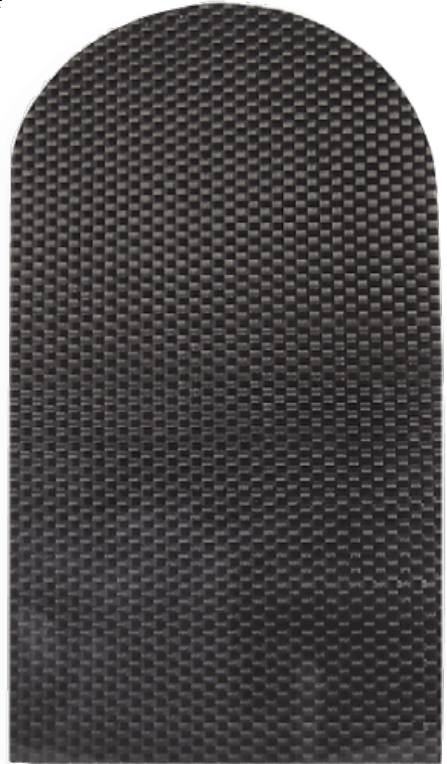
TL-2100 Carbon Blanks

Technical characteristics & usage advice

Carbon weave enhances performance, support, and protection in custom orthotics. Made from 3K carbon fibres, the graphite material provides strength, rigidity, durability, and is both thin and lightweight. The TL-2100 grades differ in carbon fibre volume and sheet thickness, with the custom-designed weave offering high strength in the orthotics longitudinal direction.

Features:

- Enhanced performance
- Strength and rigidity
- Lightweight and thin
- Custom-designed weave
- Durability



Applications:

Carbon weave in custom orthotics has several applications, including enhancing sports performance by providing lightweight, high-strength support while reducing injury risk. It also aids in foot pain relief, offering rigidity and durability for conditions like plantar fasciitis and flat feet. The material is beneficial in post-surgery recovery, promoting proper foot alignment and structural support. Additionally, it is used in diabetic foot care, offering protection and durability to prevent complications. Carbon weave is also ideal for heavy-duty use, supporting individuals engaged in high-impact activities or requiring extra support.

